



GasFinderUAS

UAS Mounted Gas Detection

Kyle MacDonald, Sales and Marketing Coordinator

T: 1-780-488-5173 ext. 104

M: 1-780-991-7801

E: kmacdonald@boreal-laser.com

BOREAL
LASER

Baffin Bay

Greenland

Boreal Laser is
Celebrating it's
25th Anniversary!

Hudson Bay

AB

MB

Edmonton, Alberta

NL

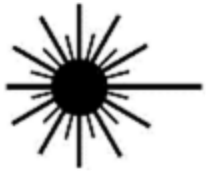
ON

United States

BOREAL
LASER



Who is Boreal Laser?



Develop and Manufacture Laser Gas Detection Products



Installations in Over 45 Different Countries



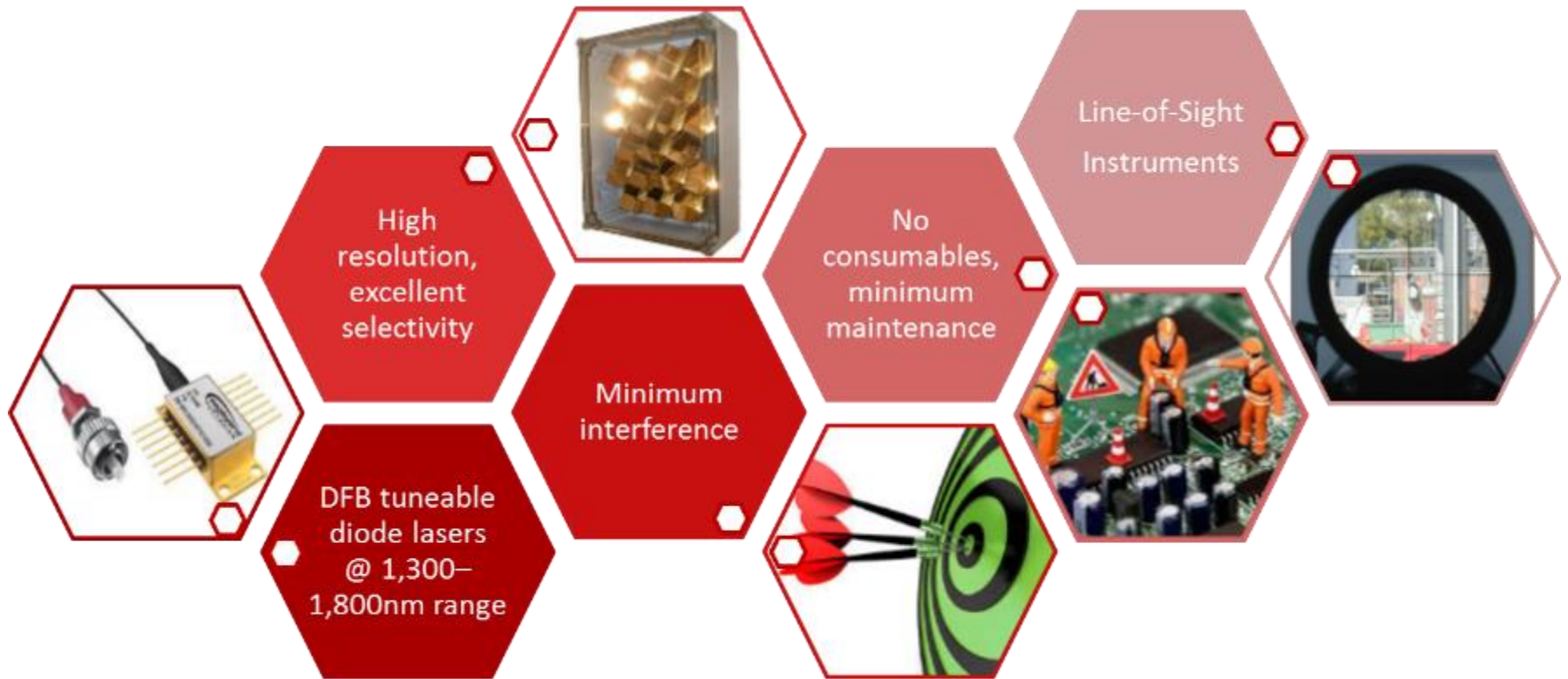
Unrivalled Technical Support



Worldwide Distribution Channel of Agents and Technicians

Our Technology

Tunable Diode Laser Absorption Spectroscopy



Example: GasFinder2

GasFinder2
Transmitter/Receiver

Up to 1000m

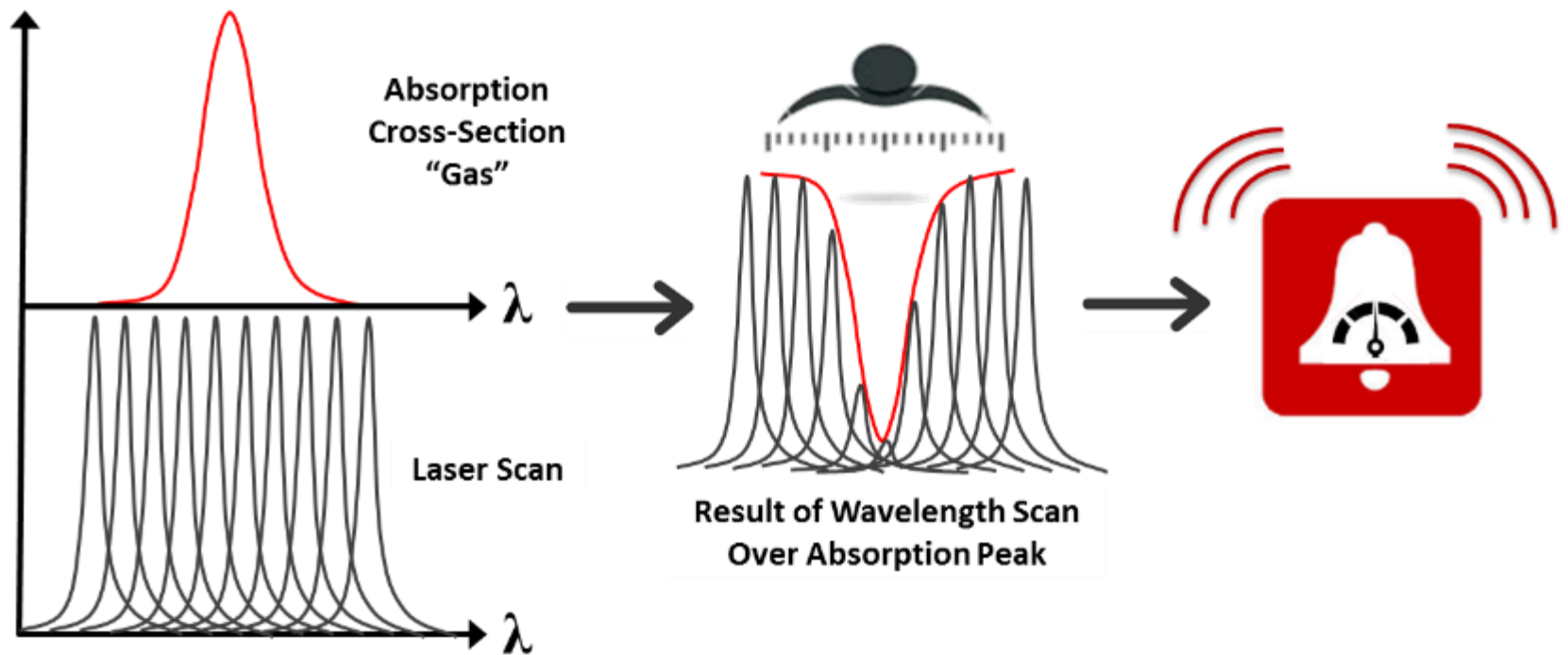
Retro-reflector
Passive Mirror





Principles of TDLAS

Tunable Diode Laser Absorption Spectroscopy





GasFinderAB

Airborne Gas Detection

Building Upon Experience

BOREAL
LASER

Technology Miniaturization

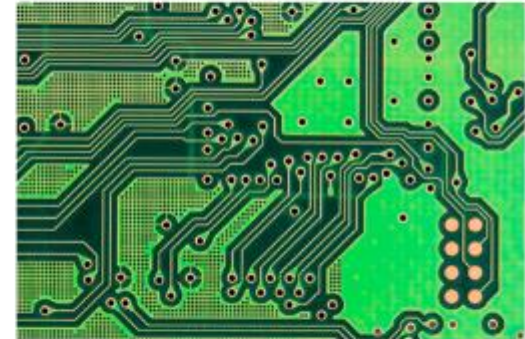
GasFinderAB Analyzer



Dimensions: 26cm x 20cm x 16cm
Weight: ~10 kg

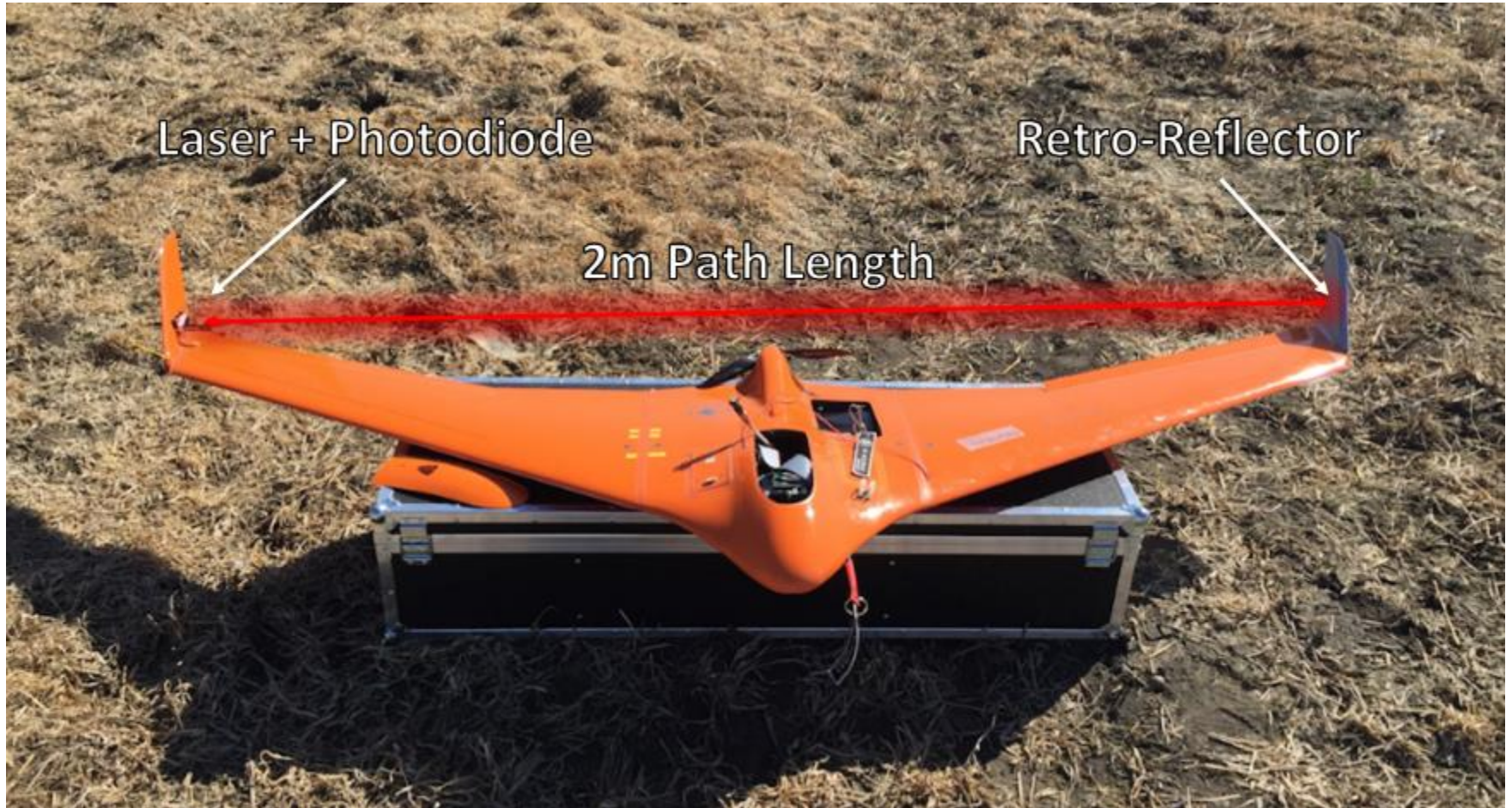


GasFinderUAS Analyzer



Dimensions: 15cm x 19cm
Weight: <1/2 kg

The Gas Detection System



CH4 Test Data: Cattle Feedlot



GasFinderUAS: Specifications



Accuracy: < 0.05 ppm (CH₄)



Altitude: 65m (200ft) Maximum



Battery Powered



Speed: 100 Knots Max (if applicable)



Default Alarm: 10 ppm



Data Rate: 1 Reading per Second

Summary of the GasFinderUAS

-  25 Years of Laser Gas Detection Experience
-  Uses TDLAS to Measure Trace Gas (CH₄)
-  World Leader in Airborne Monitoring
-  No False Alarms or Cross Sensitivities
-  No Consumables
-  Minimal Maintenance
-  < 0.05 ppm Accuracy



An aerial photograph of an industrial plant, possibly a refinery or chemical processing facility. The image shows a complex network of pipes, walkways, and large storage tanks. A prominent feature is a large, white, spherical storage tank in the lower-left quadrant. The entire scene is captured from a high angle, showing the intricate layout of the infrastructure. A semi-transparent red rectangular overlay covers the upper-left portion of the image, containing the text "Thank-you".

Thank-you