



INUKTUN

CRAFTSMANSHIP IN HIGH TECHNOLOGY



ABOUT INUKTUN

Inuktun Services
incorporated September 11, 1989

Other events in 1989



Berlin Wall



Exxon Valdez



Unfortunate
hair

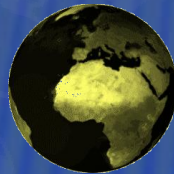
2014



- 60 people



- Global dealer network



Clients worldwide

Hitachi

Ontario Power

Atomic Energy Canada

University of Waterloo

Florida Power

Federal Aviation Administration (FAA)

Oceaneering

Raytheon

Westinghouse

Arizona Public Services Company

Toshiba

Southwest Research

Mirion

Kinectrics

PG&E

Boeing

Dakota Gasification

Oklahoma State University

US Army Corps of Engineers

PRODUCT HIGHLIGHTS

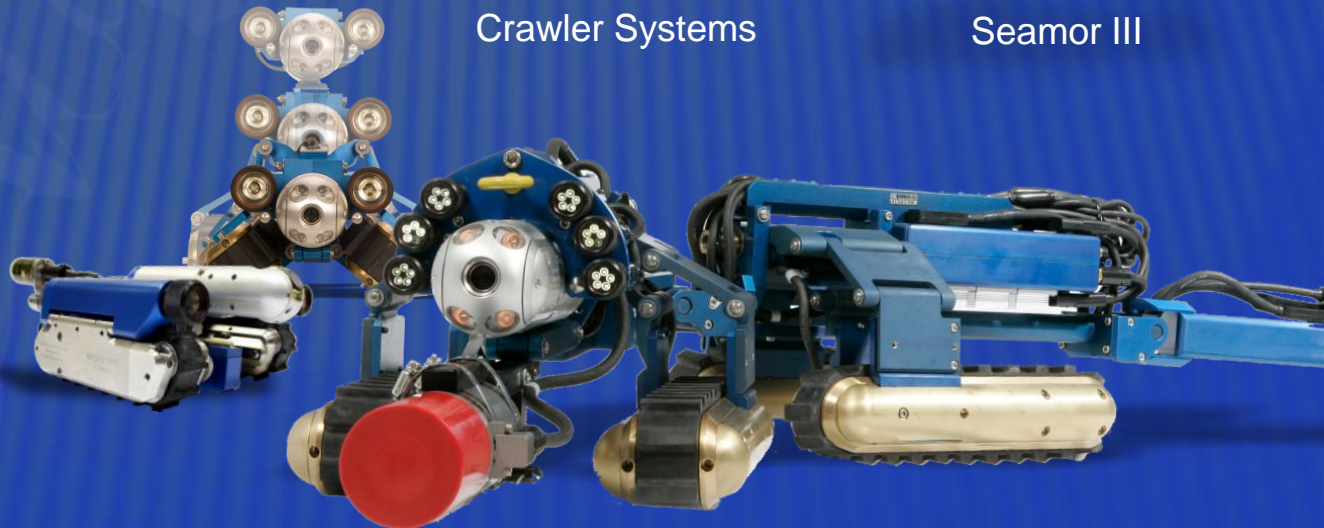
- First product: Seamor ROV
- Shift away from RC production
- Key product lines in 2014

INDUSTRIES

- 🔍 Pipe inspection
- 🥤 Potable water
- ⚡ Hydro electric
- ☢️ Nuclear
- 🛡️ Military and Security
- 🚑 Search and rescue
- 🛢️ Oil and Gas



Cameras



Crawler Systems

Seamor III

TODAY

- Modular in design
 - Inspection cameras
 - Crawlers
- Infinite in application
 - Mobile and miniature technology
 - Industrial and military applications
 - Hazardous environments and deep water



2014



INUKTUN

CRAFTSMANSHIP IN HIGH TECHNOLOGY

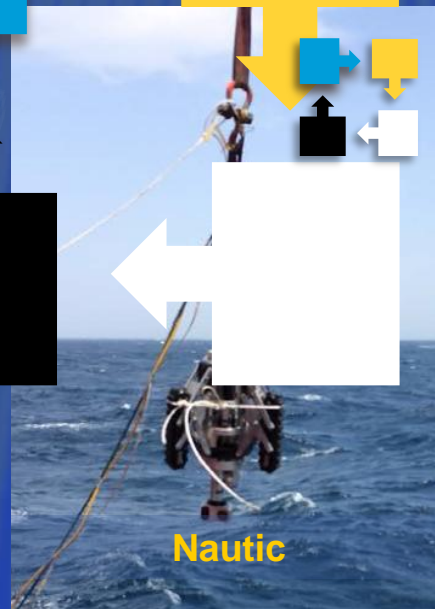
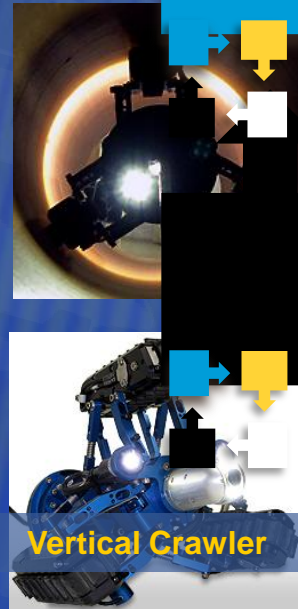
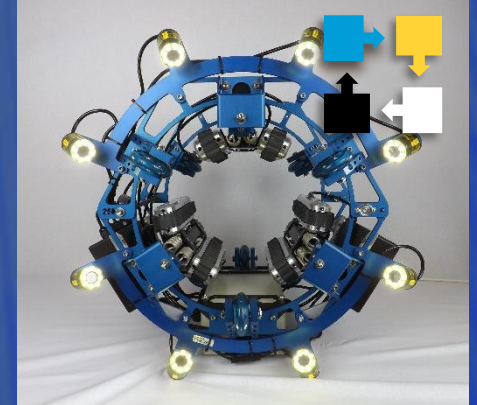
“

Modular in Design

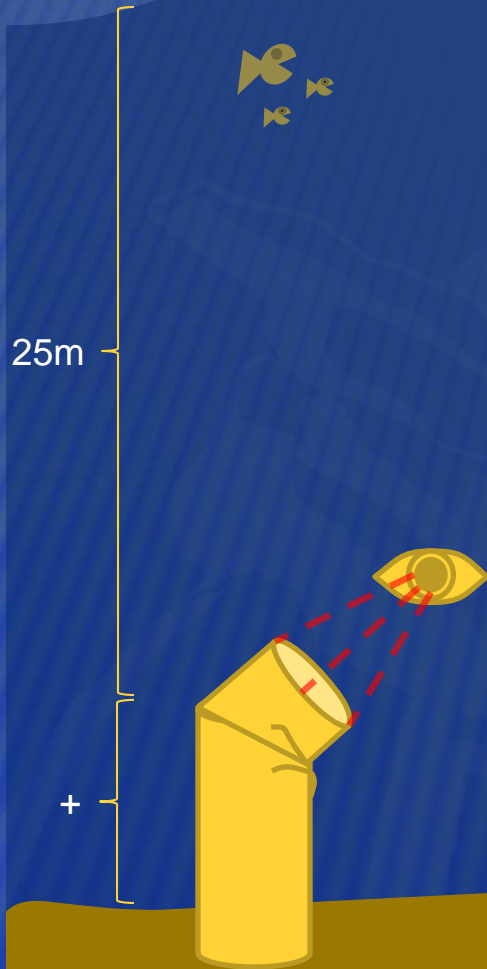
Infinite in Application

CUSTOM SOLUTIONS

- Multifunction exterior climber
- Third party sensors
- Pipe inspection in any orientation
- Magnetic inspection and maintenance
- **Ten to twenty custom solutions annually**



EXAMPLES

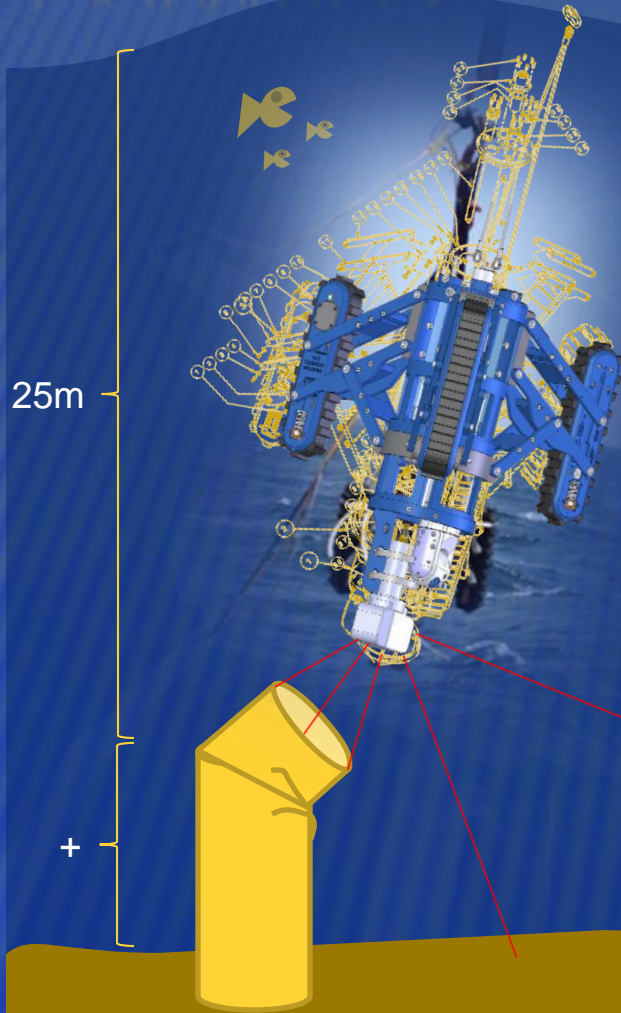


Nautic Group

THE CHALLENGE:

- Pipe damage assessment
 - Bent, buckled
 - Damage located under water, below mudline
 - Required visual inspection and 3rd party laser scanner
-
- Repair or install a new pipe?

EXAMPLES



Nautic Group

CUSTOM SOLUTION:

- VT150™ waterproof Vertical Crawler
- Modular addition of larger Minitracs™
- Custom spring expansion to traverse buckle point
- Self-adjusts to pipe diameter without pilot input
- Third party laser sensor for navigation
- Design and manufacture completed and tested in one month



EXAMPLES



Oceaneering International

THE CHALLENGE:

Windfarm monopoles inspection

INCLUDING:

- Simultaneous remote functions (visual inspection, sampling, cleaning)
 - All surface access (floors, walls, ceilings)
 - Easily clears obstacles (welds, surface defects)
-
- Eight weeks from start to deployment

EXAMPLES

Oceaneering International

CUSTOM SOLUTION:

- MicroMag™ magnetic crawler
- Four Microtrac™ drives
- Spectrum 45™ and Crystal Cam®
- With custom freely articulating chassis
- Custom brush system that can be raised
- Modular design for future m



60m

60m

EXAMPLES



EXAMPLES



Domson Engineering

THE CHALLENGE:

Inspect and measure tank thickness while in operation

- Tank is in use
 - Contains iron oxide slurry
 - Thickness measurement required
-
- Don't shut down the tank

EXAMPLES



Domson Engineering

CUSTOM SOLUTION:

- MicroMag™ magnetic crawler
- Spectrum™ and Crystal Cam® cameras
- Adjustable brush and sensor position
- Integrated 3rd party ultrasonic transducer to measure thickness

Survived three weeks inside tank with only minor cosmetic damage



EXAMPLES



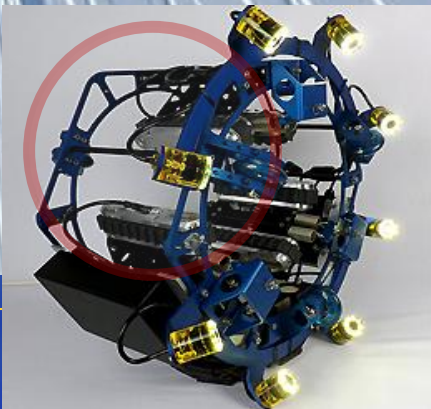
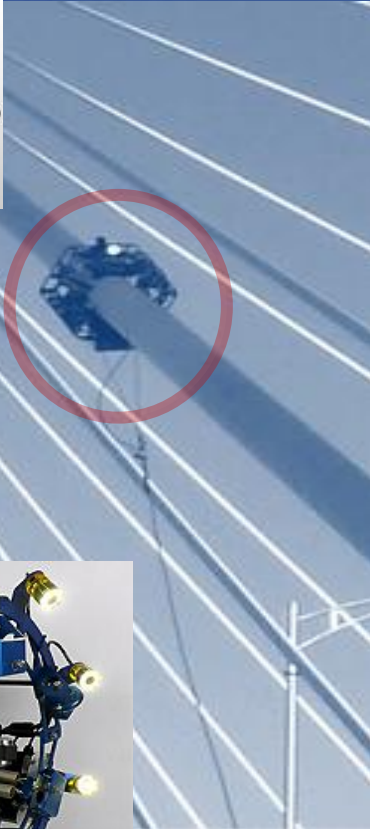
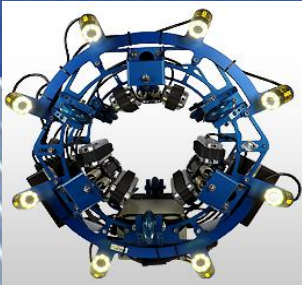
Port Mann Bridge

THE CHALLENGE:

Inspect integrity of cable stays

- Inspect full circumference and length
 - Stay diameter varies
 - Exposure to elements
 - New bridge reflects civic pride and is politically sensitive
 - Zero damage, especially to harmonic dampening
 - Minimize driver distraction
-
- **Inspect fully with minimum impact**

EXAMPLES



Port Mann Bridge

CUSTOM SOLUTION:

Developed the MicroClimber™

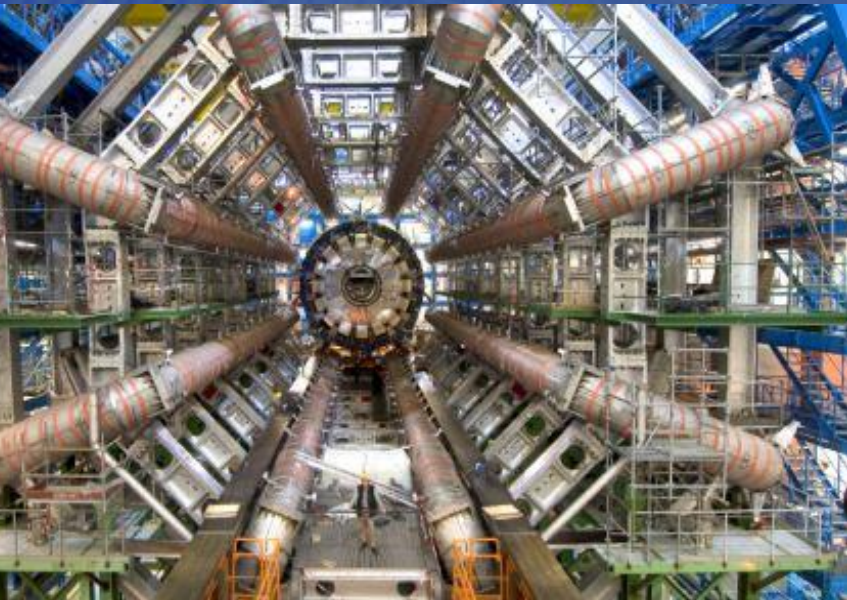
- Six MicroTrac™ drives
- Eight Crystal Cam® cameras
- Custom adjustable chassis
- No visual impact or wear
- Adapts to range of diameters, sensors and tools

EXAMPLES

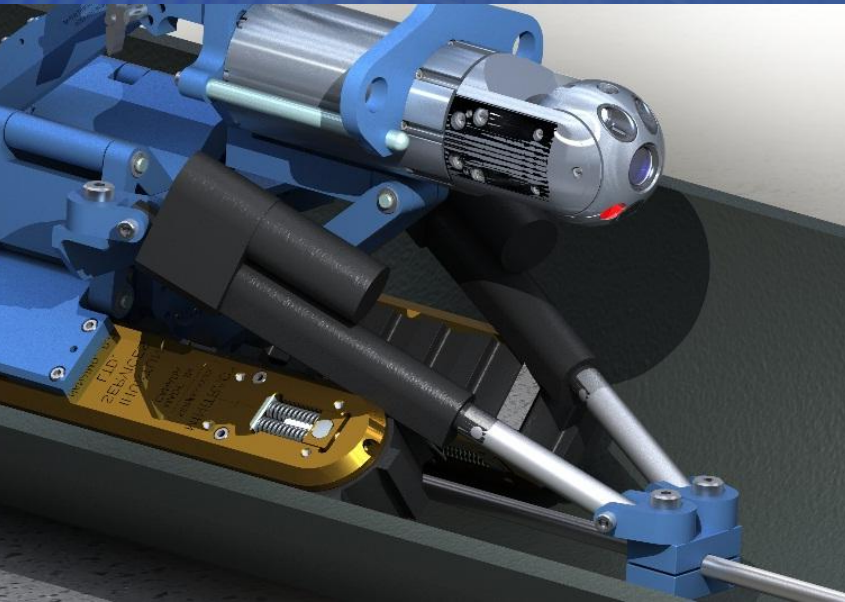
Fermilab

THE CHALLENGE:

- Inspect and remove grout blocking neutrino-muon beamline
 - Grout 4x harder than concrete
- Deploy and control 20,000psi water cannon far inside narrow pipe
 - Cannon produces 100lb reverse thrust
 - Transport heavy hose assembly (water-filled, high pressure)
 - Traverse 280 feet in 15 inch pipe



EXAMPLES



Fermilab

CUSTOM SOLUTION:

- Versatrax 150™ crawler
- Custom assembly with water cannon and two actuators
- Climbed in pipe with camera operational
- Advanced down the pipe with cannon engaged

Submersed in 4 inches of hot water without electrical malfunction

EXAMPLES



Custom Versatrax 150™ for Fermilab
with water cannon and two actuators

“ *Modular in Design
Infinite in Application* ”



INUKTUN

CRAFTSMANSHIP IN HIGH TECHNOLOGY



see it for yourself.



INUKTUN

CRAFTSMANSHIP IN HIGH TECHNOLOGY

