

realSens™ Service Value Proposition





realSens™





realSens™ Survey Take-off





Synodon's realSens™ Services Summary

- **Natural Gas Leak Detection**
- **Liquid Hydrocarbon Leak Detection**
- **Pipeline Threat Assessments**
- **Tree Canopy Encroachment**
- **Waterway Identification**
- **3-D Water Crossings Analysis**
- **Pipeline Location Classification**
- **KML (Shape File) Correction**
- **Facility(Area) Emission Detection**
- **RoW Slope Analyses**

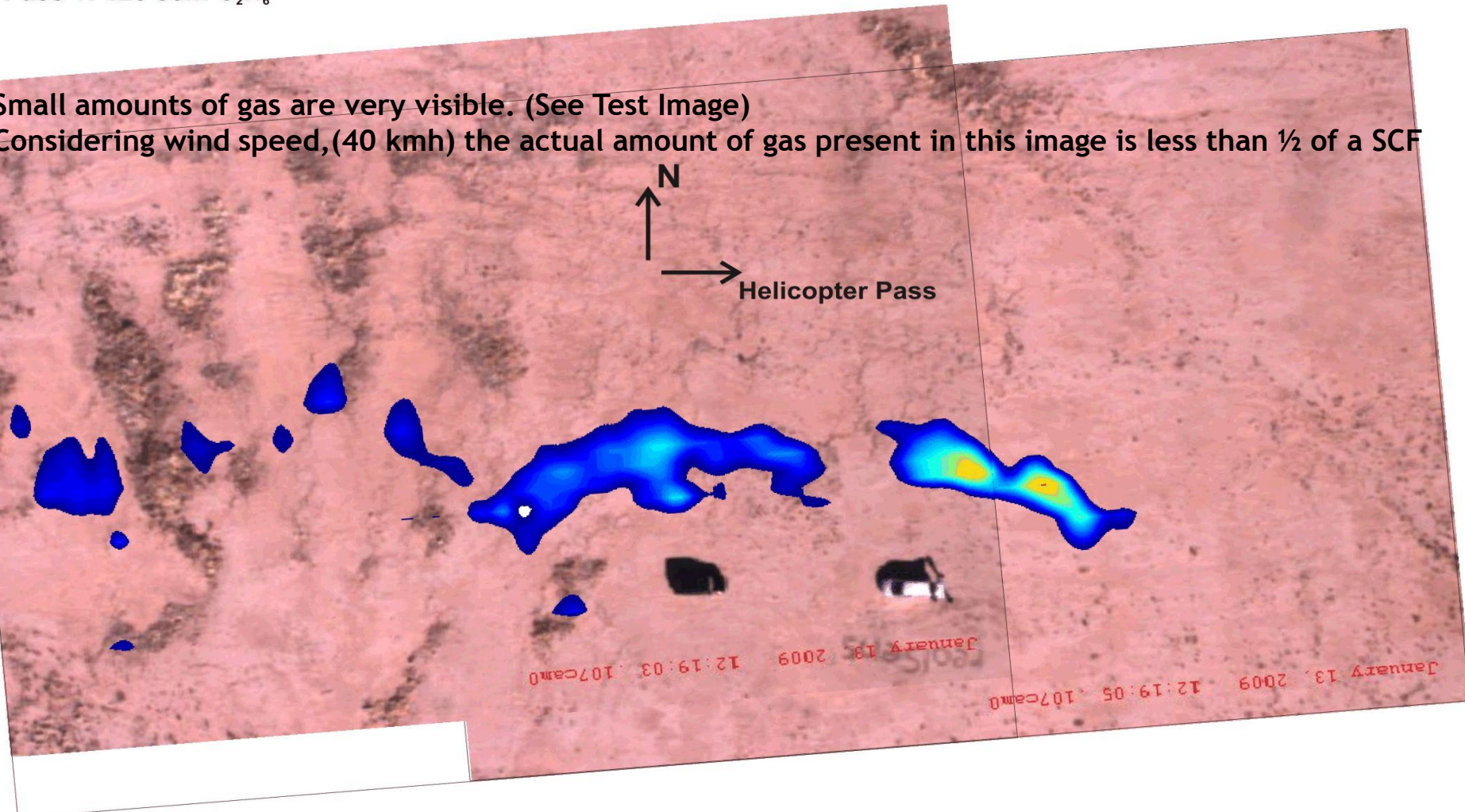




Gas Leak

Pass 1: 125 scfh C₂H₆

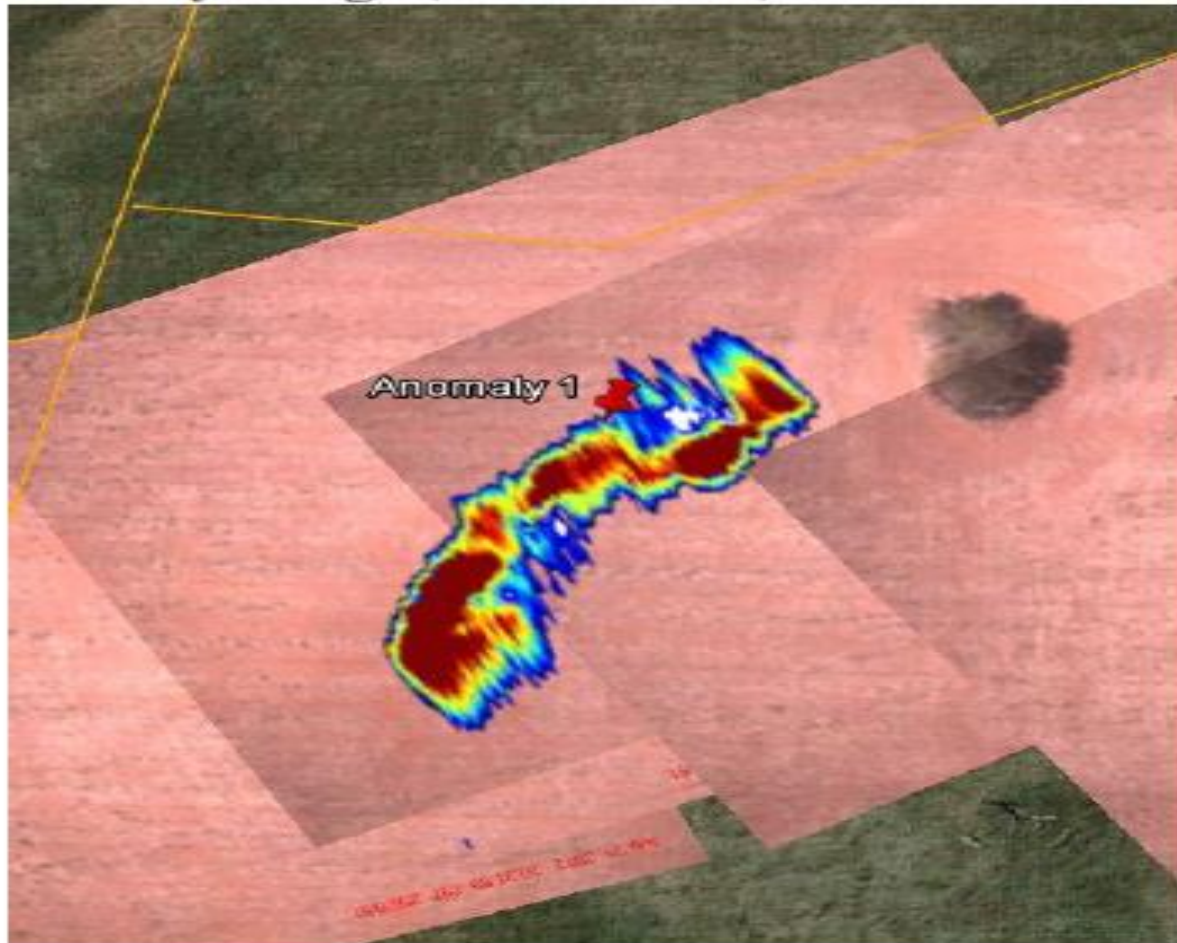
- Small amounts of gas are very visible. (See Test Image)
- Considering wind speed,(40 kmh) the actual amount of gas present in this image is less than ½ of a SCF





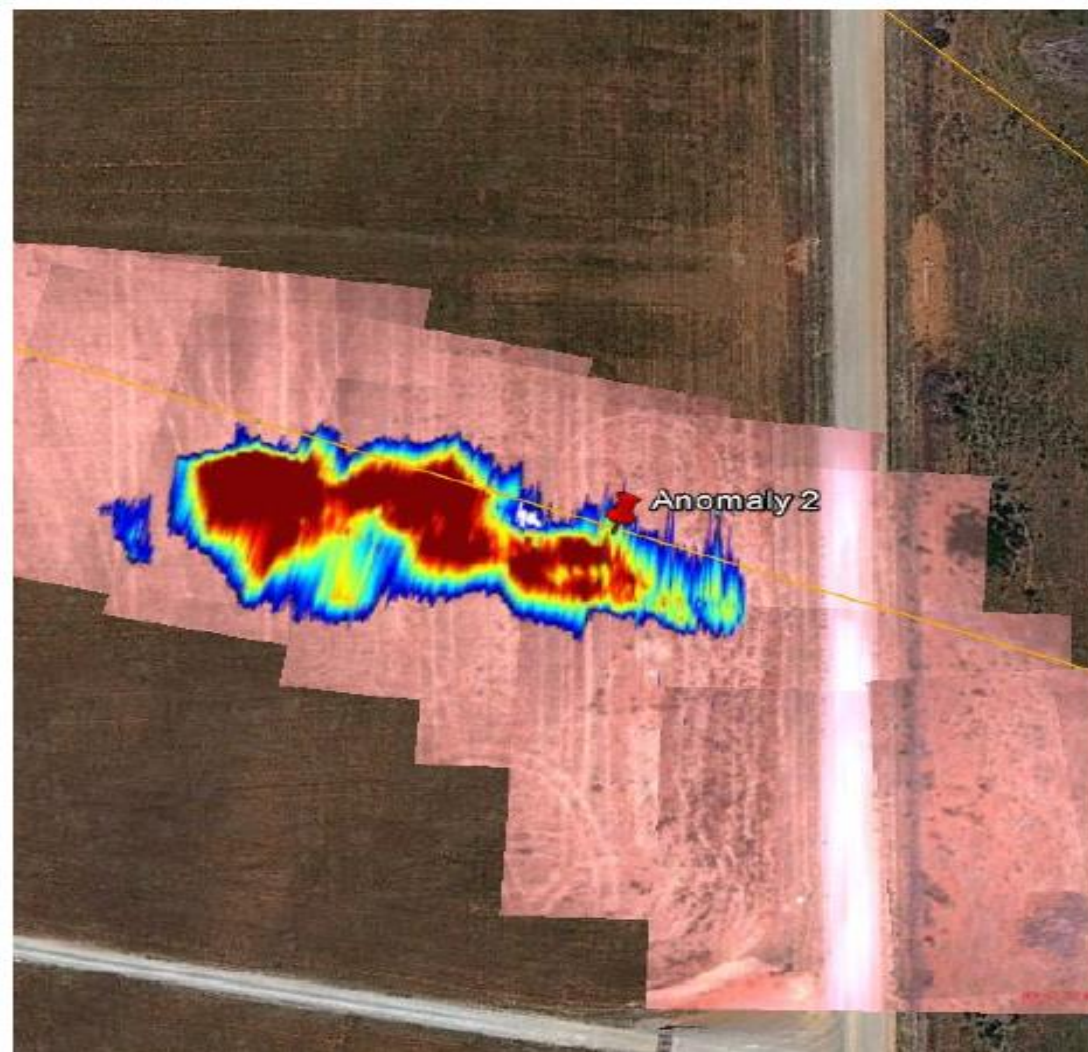
Gas Leak

Anomaly Image (Second Pass)



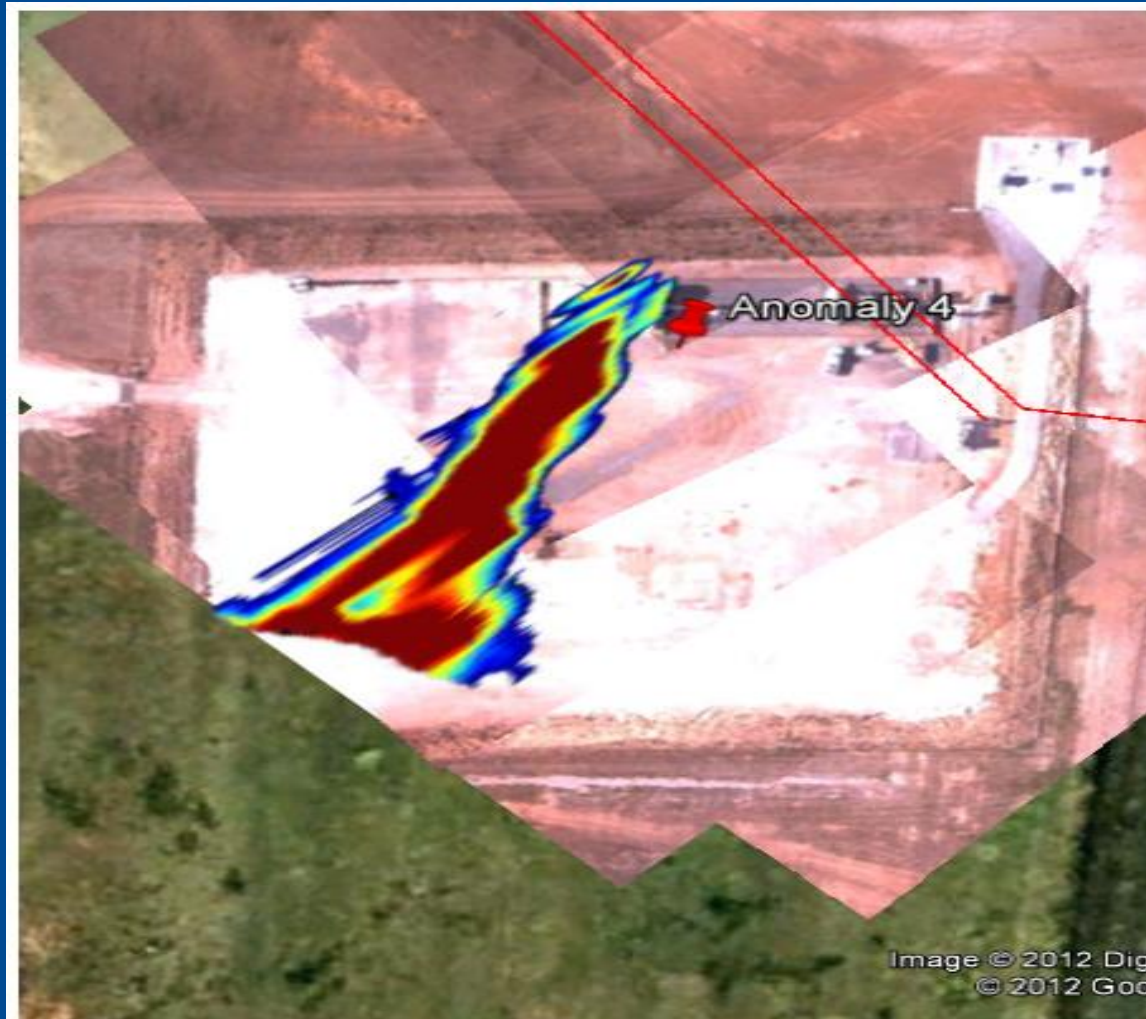


Gas Leak



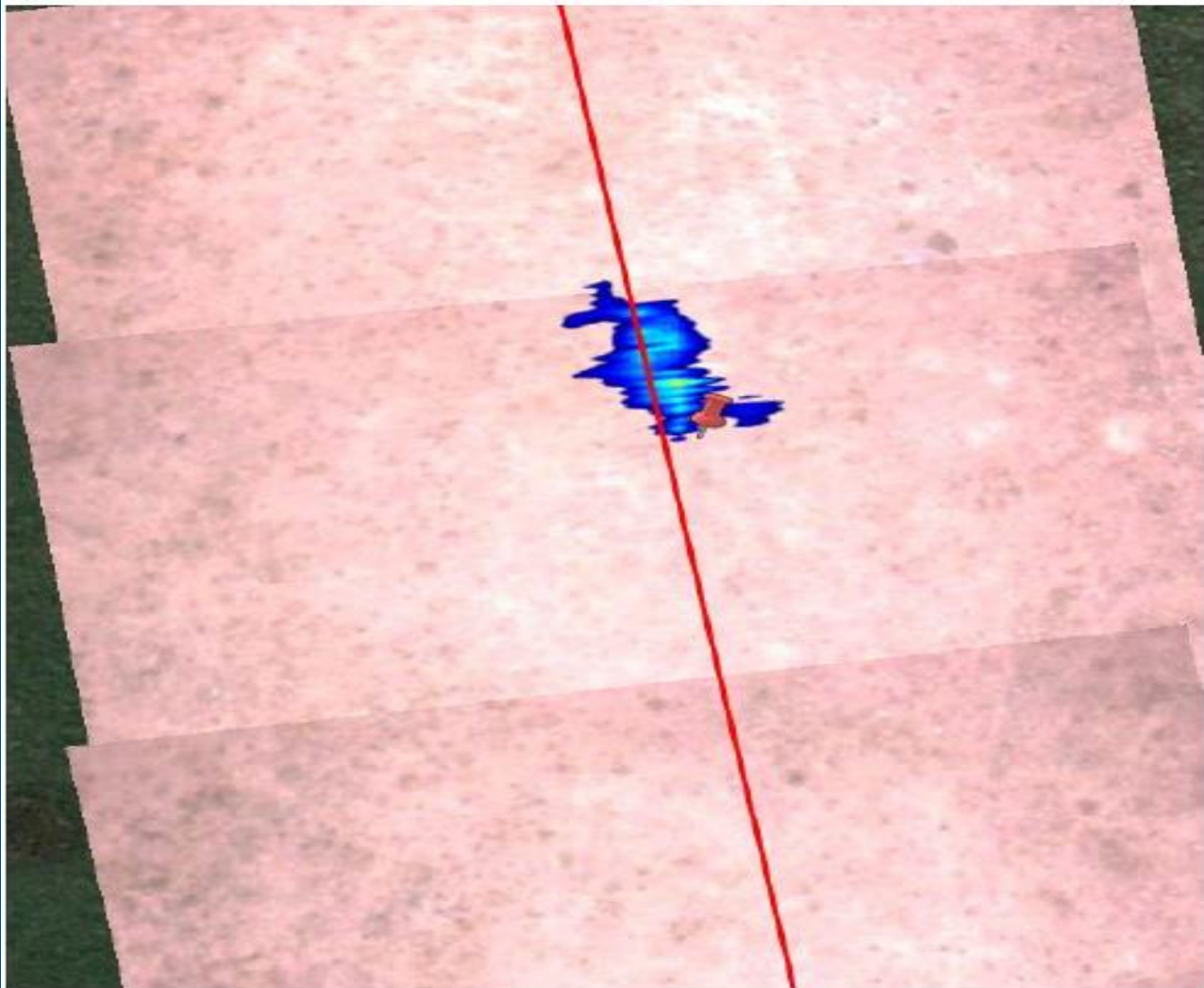


Gas Leak





Gas Leak



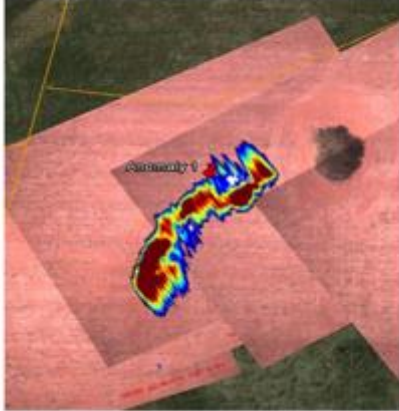






Gas Leak



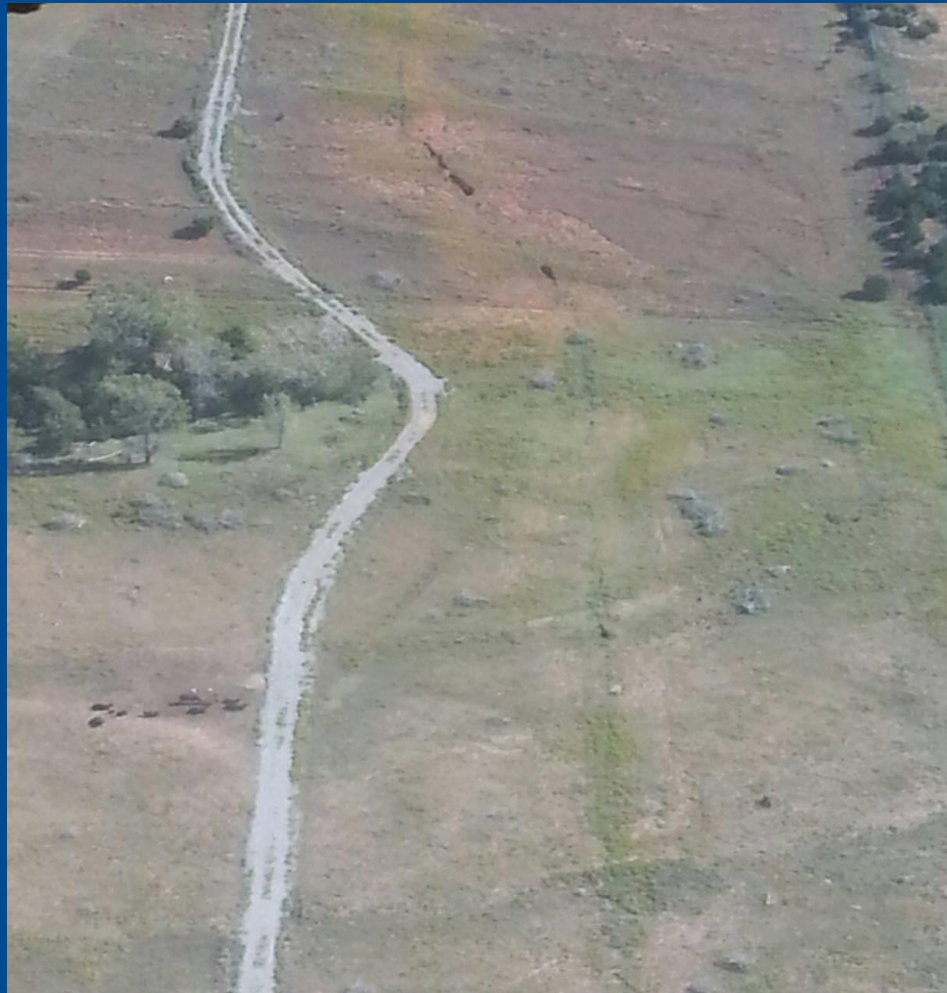


Natural Gas Leak Anomaly Report

Gas Anomaly 10525-01B (sample)									
<p>Anomaly Image</p> 	<p>Location in Project Area</p> 								
<p>Anomaly Details</p> <table border="1"> <thead> <tr> <th>Survey</th> <th>Description</th> </tr> </thead> <tbody> <tr> <td> <p>Date: July 31, 2012 Time: 15:32 CST Type: Methane</p> </td> <td> <p>A relatively large gas anomaly indication originating from an open field. This is the second pass over the same location as gas anomaly 10525-01A.</p> </td> </tr> <tr> <td> <p>Location Latitude: 35.000000 deg Longitude: -97.000000 deg State, Country: Oklahoma, USA County: Nearest City: Nowhere City</p> </td> <td> <p>Wind direction was changing direction between North and South and averaged 8-10 miles/hour. There is a relatively large location uncertainty (estimated at over 100 feet) due to the wind conditions.</p> </td> </tr> <tr> <td> <p>Pipeline Owner: Gas Producer System Name: System Name ID: Pipeline ID Product: Natural Gas</p> </td> <td> <p>Synodon Contact Gordon Lair Cell: 1-780-982-0983 Office: 1-780-468-9568 x26 gordon.lair@synodon.com</p> </td> </tr> </tbody> </table>		Survey	Description	<p>Date: July 31, 2012 Time: 15:32 CST Type: Methane</p>	<p>A relatively large gas anomaly indication originating from an open field. This is the second pass over the same location as gas anomaly 10525-01A.</p>	<p>Location Latitude: 35.000000 deg Longitude: -97.000000 deg State, Country: Oklahoma, USA County: Nearest City: Nowhere City</p>	<p>Wind direction was changing direction between North and South and averaged 8-10 miles/hour. There is a relatively large location uncertainty (estimated at over 100 feet) due to the wind conditions.</p>	<p>Pipeline Owner: Gas Producer System Name: System Name ID: Pipeline ID Product: Natural Gas</p>	<p>Synodon Contact Gordon Lair Cell: 1-780-982-0983 Office: 1-780-468-9568 x26 gordon.lair@synodon.com</p>
Survey	Description								
<p>Date: July 31, 2012 Time: 15:32 CST Type: Methane</p>	<p>A relatively large gas anomaly indication originating from an open field. This is the second pass over the same location as gas anomaly 10525-01A.</p>								
<p>Location Latitude: 35.000000 deg Longitude: -97.000000 deg State, Country: Oklahoma, USA County: Nearest City: Nowhere City</p>	<p>Wind direction was changing direction between North and South and averaged 8-10 miles/hour. There is a relatively large location uncertainty (estimated at over 100 feet) due to the wind conditions.</p>								
<p>Pipeline Owner: Gas Producer System Name: System Name ID: Pipeline ID Product: Natural Gas</p>	<p>Synodon Contact Gordon Lair Cell: 1-780-982-0983 Office: 1-780-468-9568 x26 gordon.lair@synodon.com</p>								
<table border="1"> <tr> <td rowspan="2" style="text-align: center;">  </td> <td> <p>6916 Roper Road Edmonton, Alberta Canada, T6B 3H9</p> </td> <td> <p>PROJECT Oklahoma Survey</p> </td> <td> <p><small>The information contained herein is proprietary to Synodon Inc. and shall not be disclosed in whole or in part, to any other party, without the express permission in writing by Synodon Inc.</small></p> </td> <td> <p>REV A</p> </td> </tr> <tr> <td> <p>Document No. ICUS\10525RIGA_01_B</p> </td> <td> <p>SHEET 1 of 1</p> </td> </tr> </table>			<p>6916 Roper Road Edmonton, Alberta Canada, T6B 3H9</p>	<p>PROJECT Oklahoma Survey</p>	<p><small>The information contained herein is proprietary to Synodon Inc. and shall not be disclosed in whole or in part, to any other party, without the express permission in writing by Synodon Inc.</small></p>	<p>REV A</p>	<p>Document No. ICUS\10525RIGA_01_B</p>	<p>SHEET 1 of 1</p>	
	<p>6916 Roper Road Edmonton, Alberta Canada, T6B 3H9</p>		<p>PROJECT Oklahoma Survey</p>	<p><small>The information contained herein is proprietary to Synodon Inc. and shall not be disclosed in whole or in part, to any other party, without the express permission in writing by Synodon Inc.</small></p>	<p>REV A</p>				
	<p>Document No. ICUS\10525RIGA_01_B</p>	<p>SHEET 1 of 1</p>							

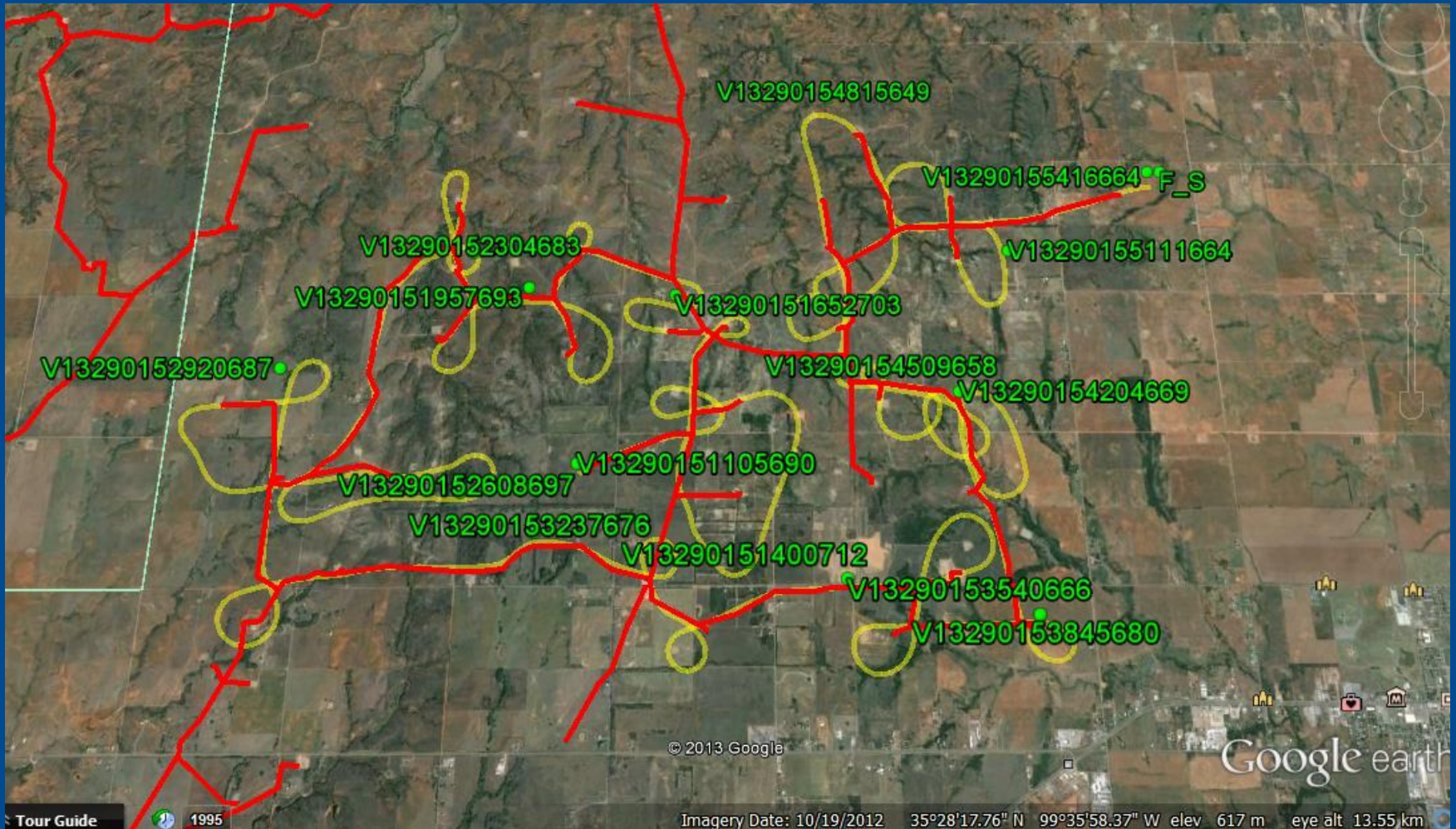


Real Time Threats-Sunken Earth





Pipeline Network-Survey Output





Synodon's realSens™ Services



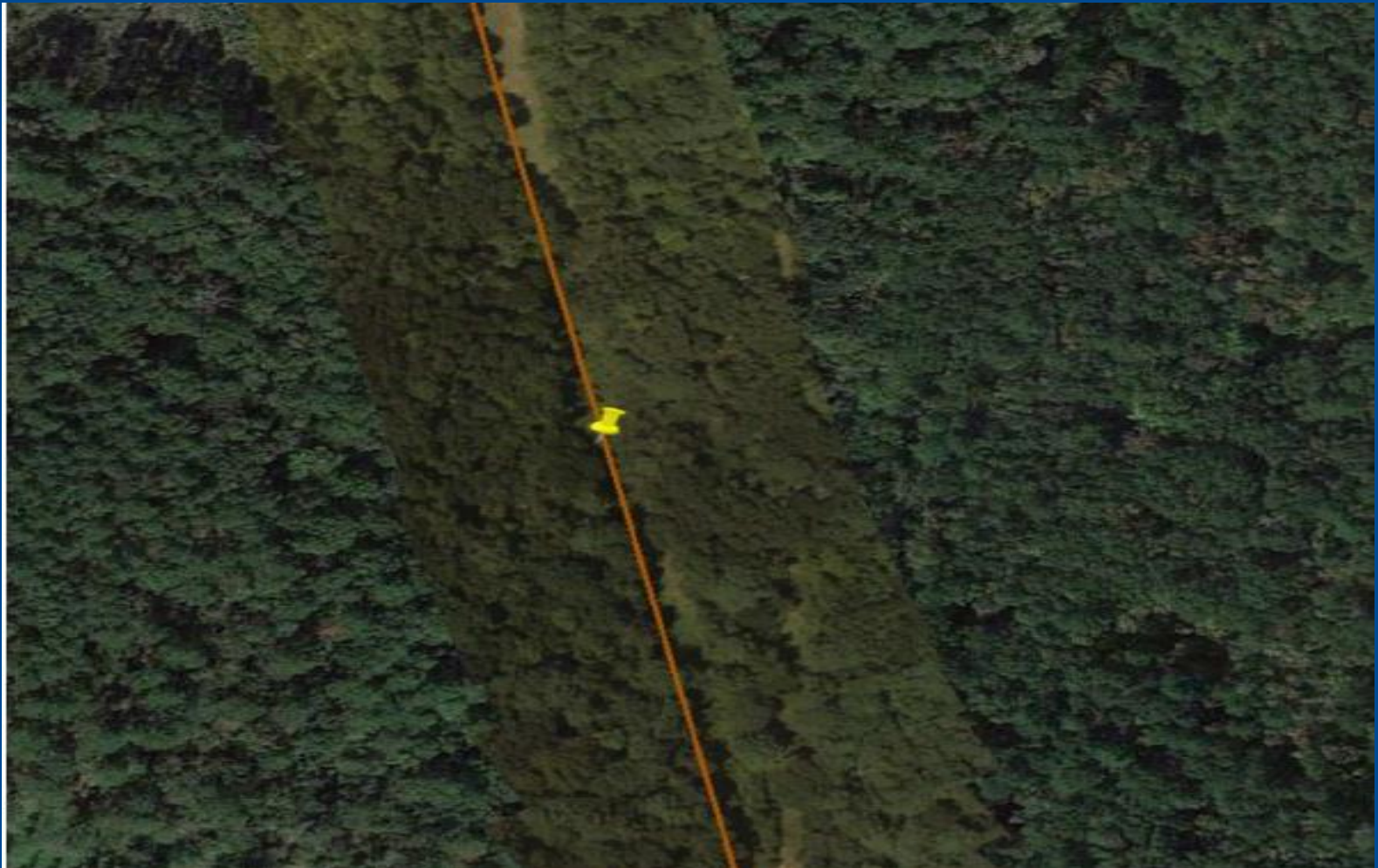


Pipeline Threat Assessment





Vegetation Cover



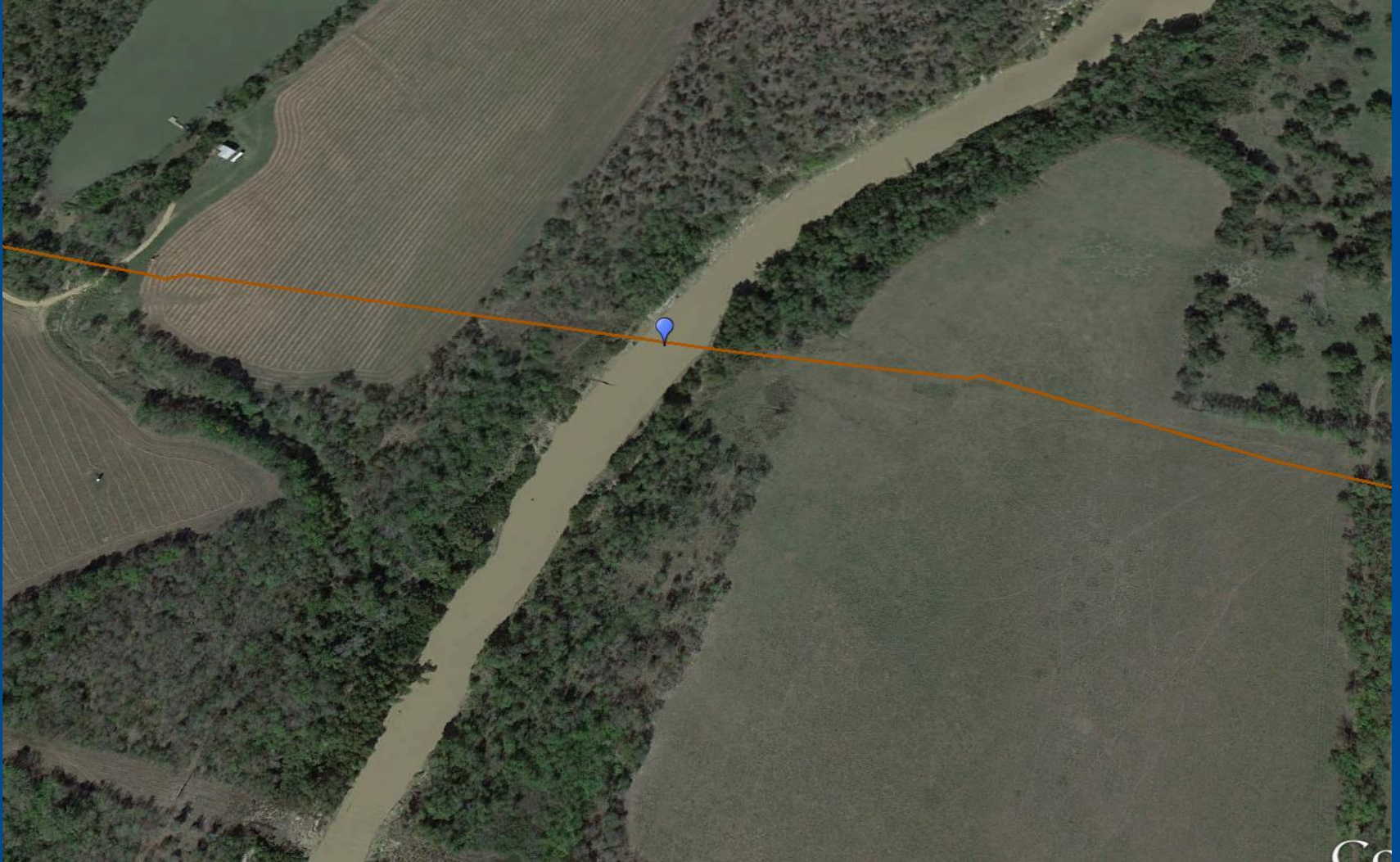


Water ID



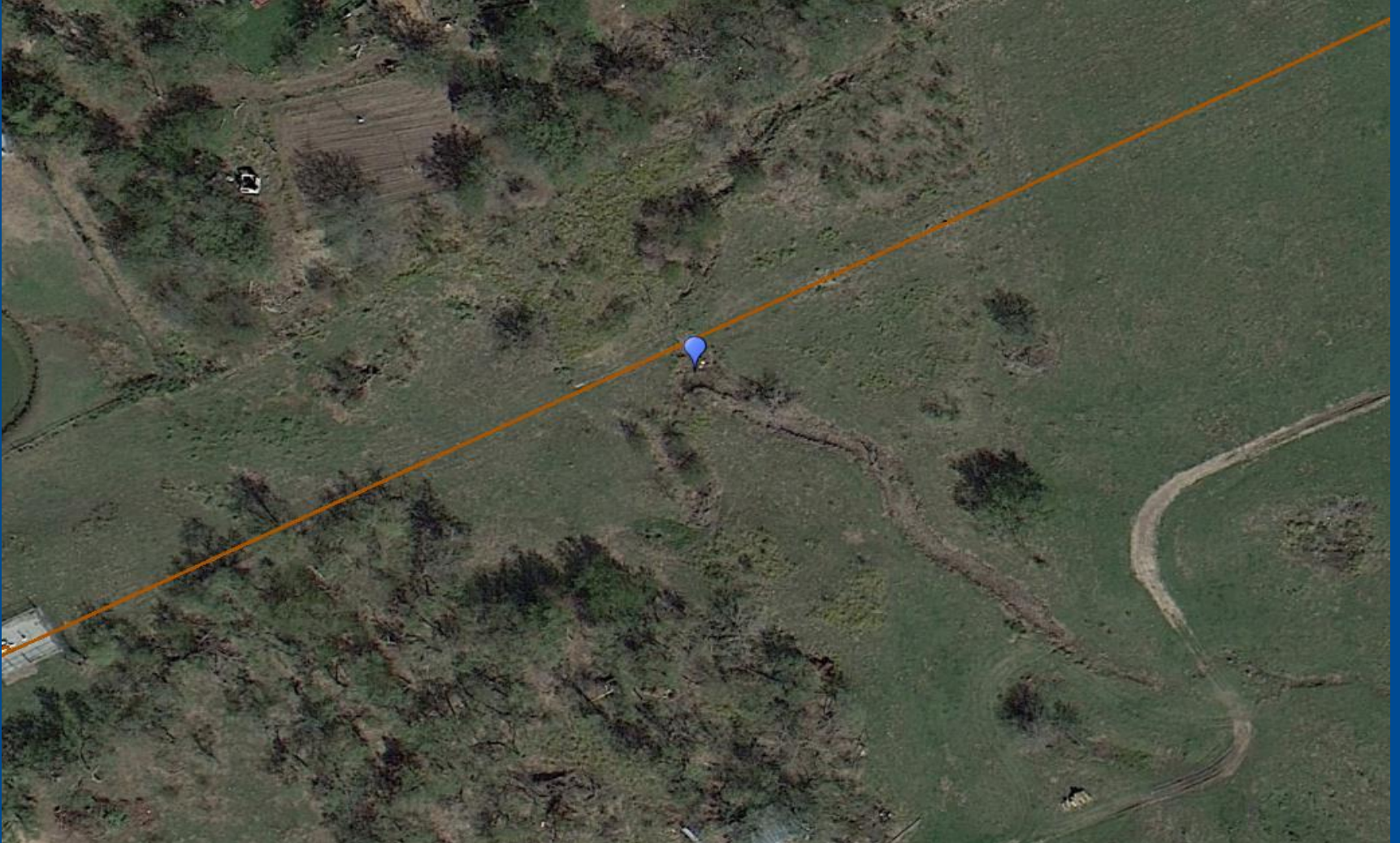


Water ID Large





Water ID Small-Erosion from High Water Runoff



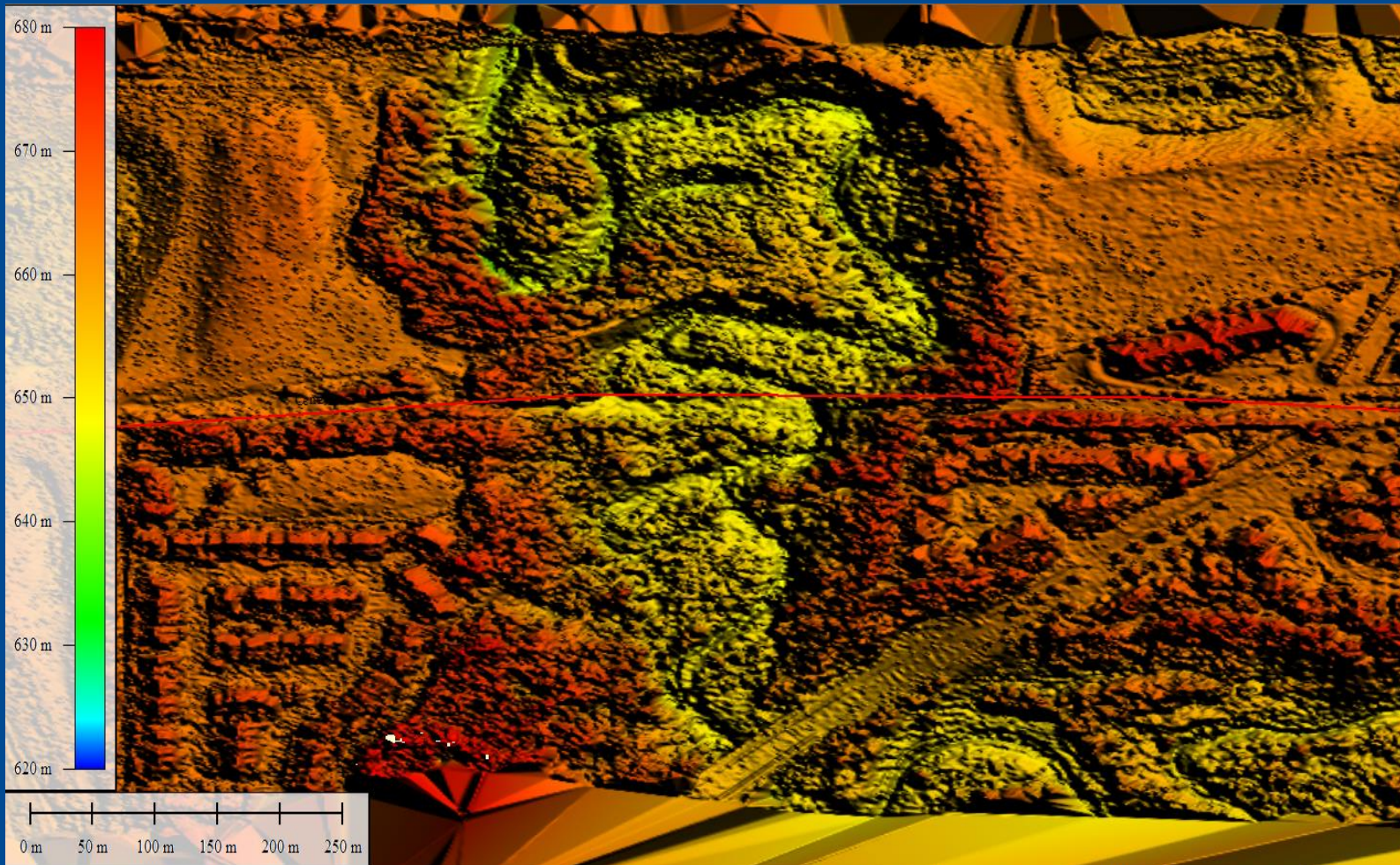


3-D Water Crossing Analysis



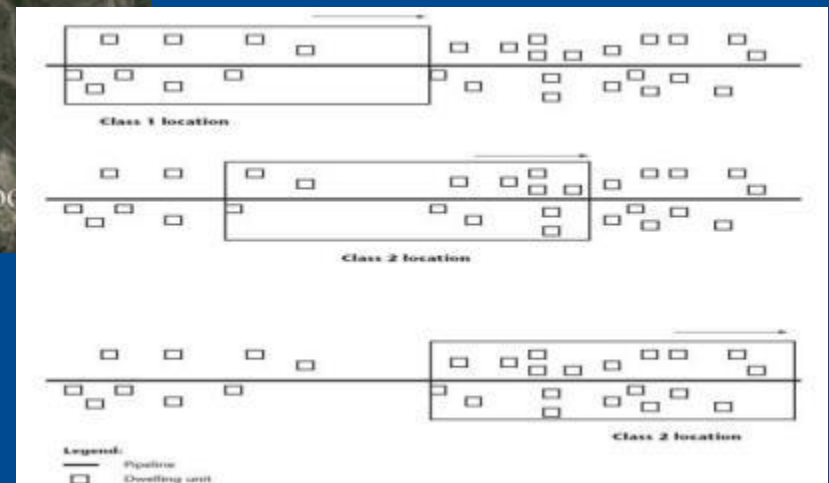
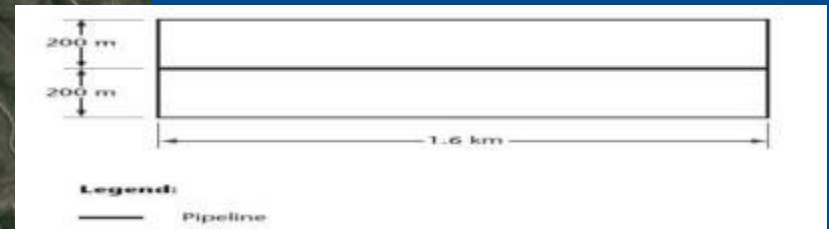


3-D Water Crossing Analyses-Slope Profile



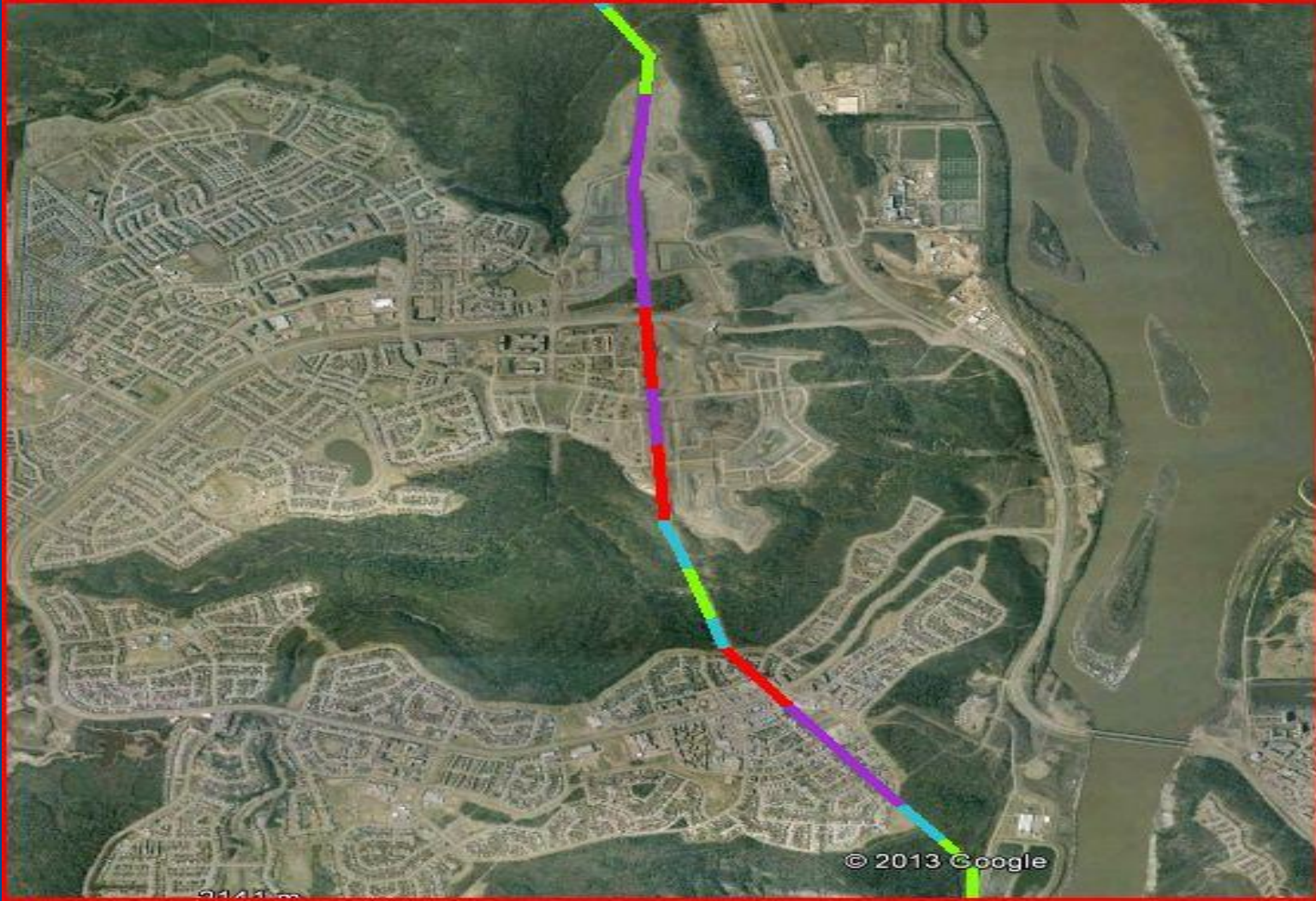


Pipeline Location Classification





Pipeline Location Classification



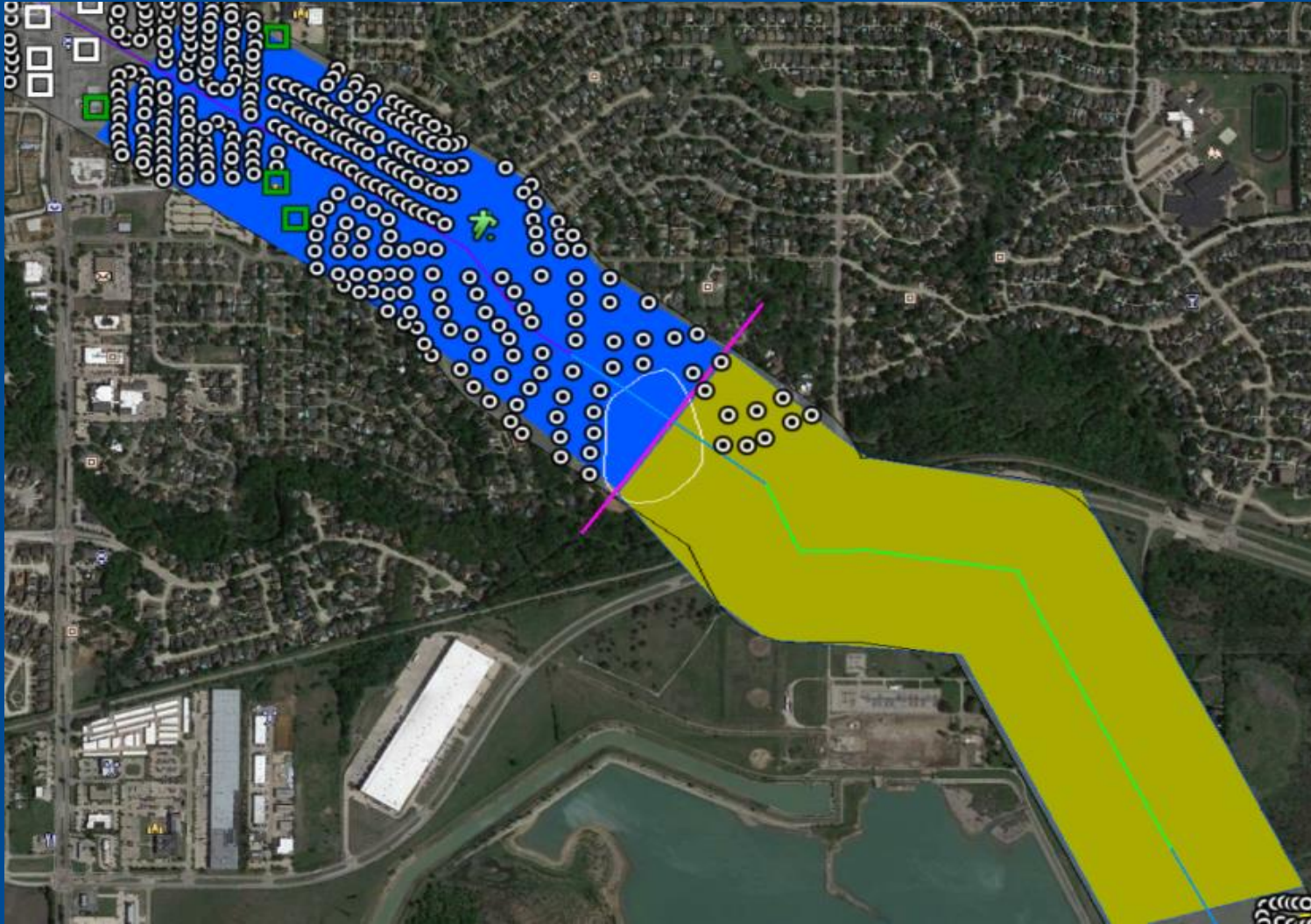


Pipeline Location Classification



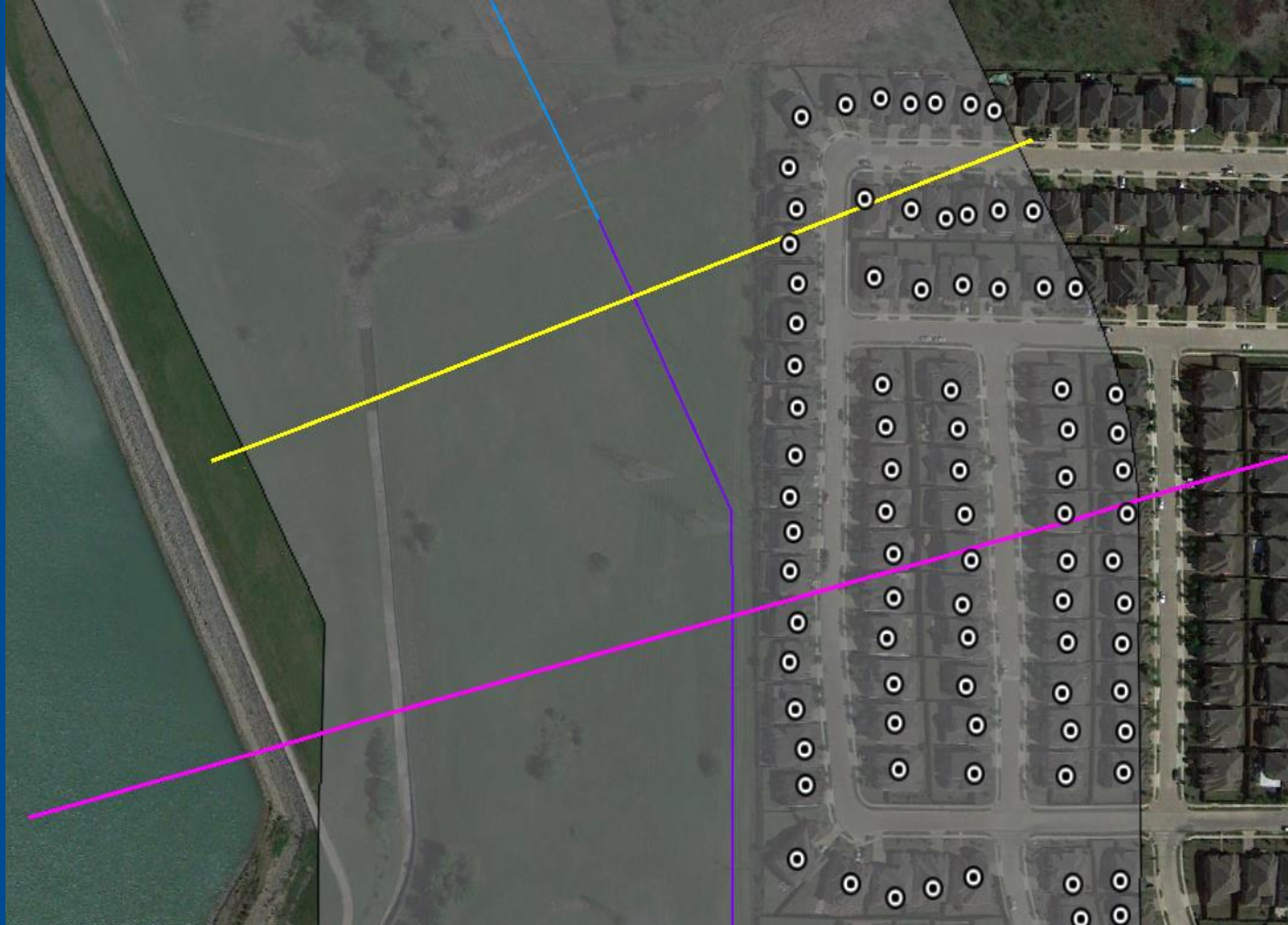


Pipeline Location Classification





Pipeline Location Classification



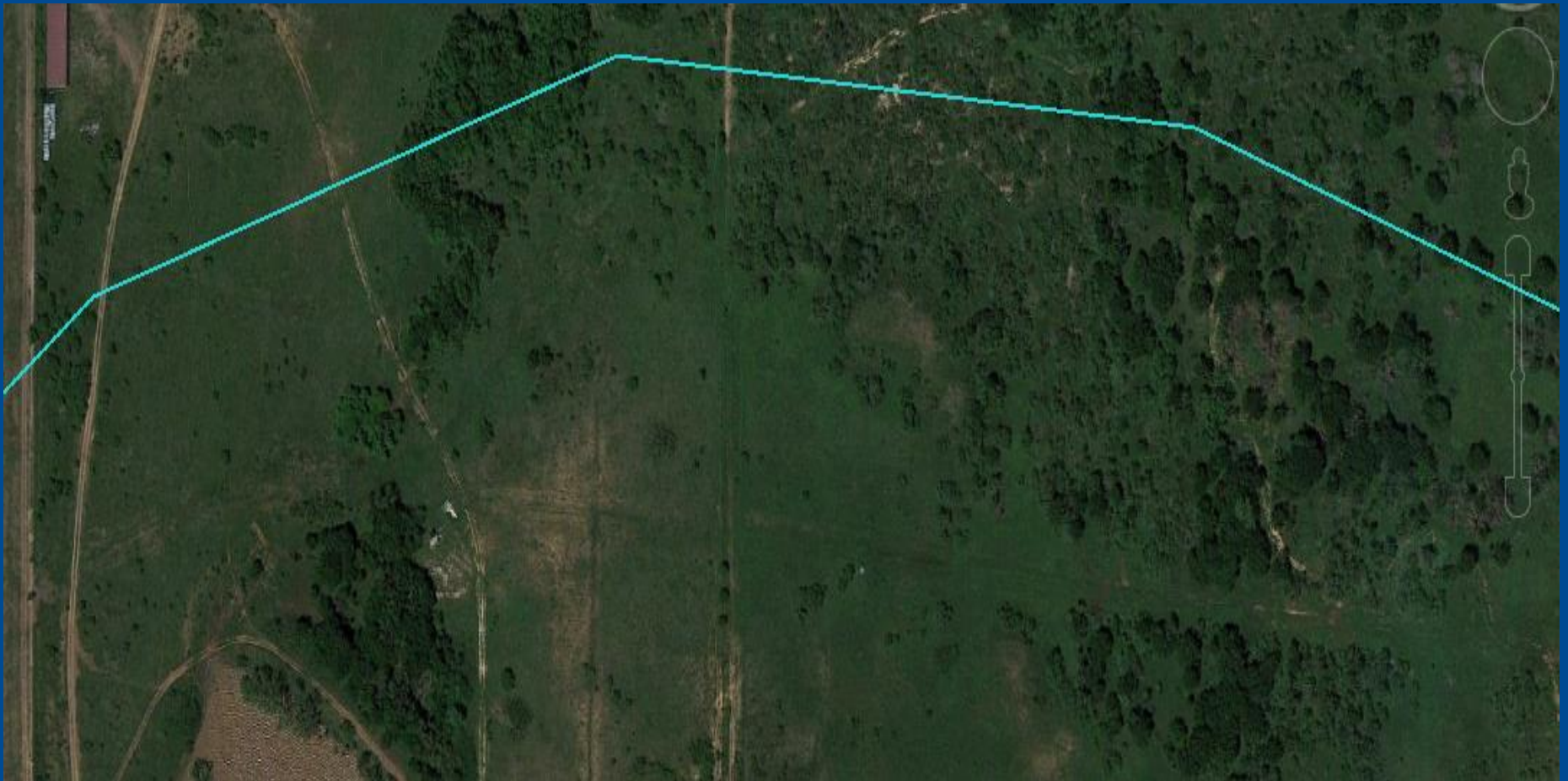


KML(Shape File) Correction



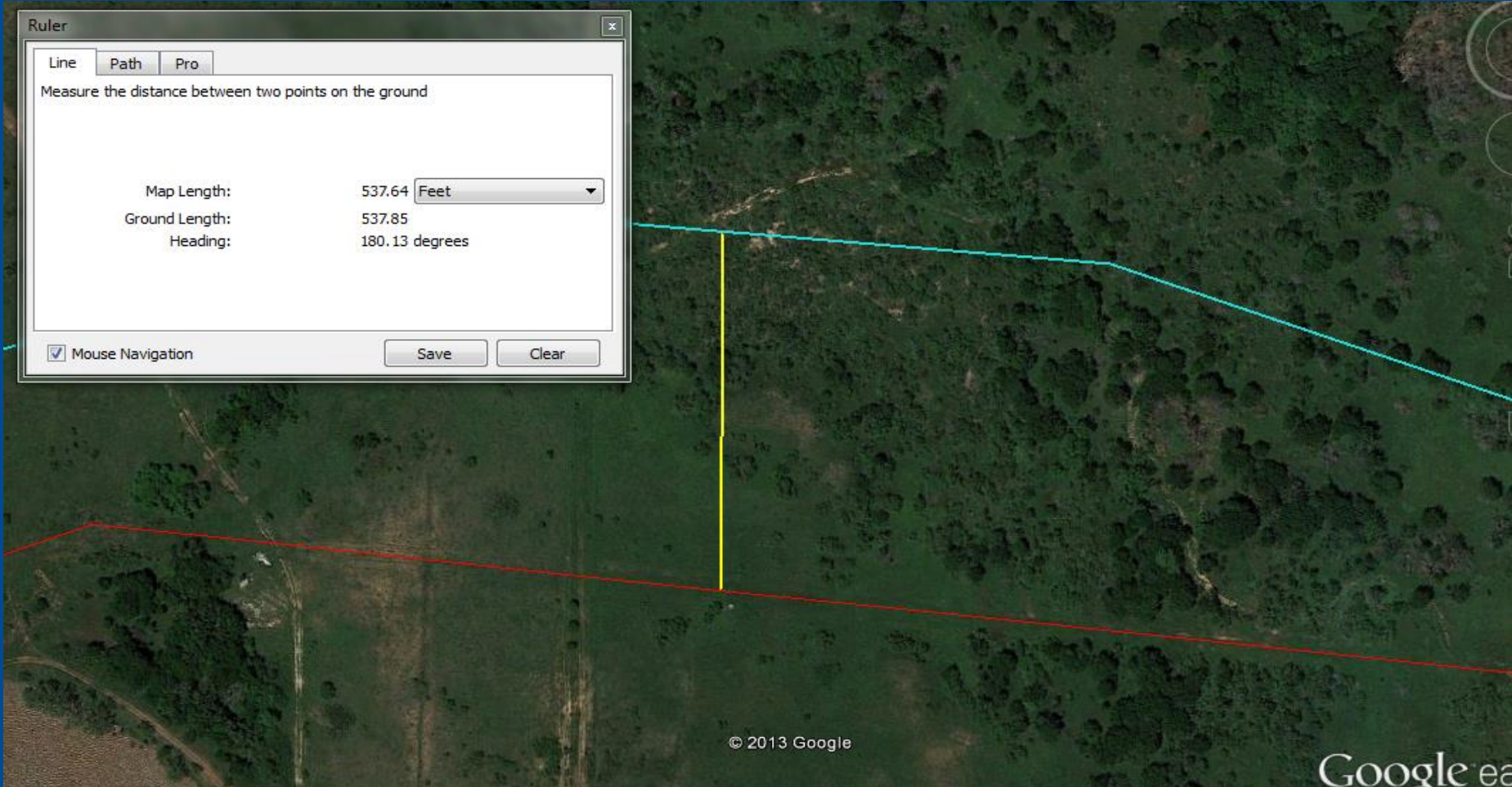


KML(Shape File) Correction





KML(Shape File) Correction



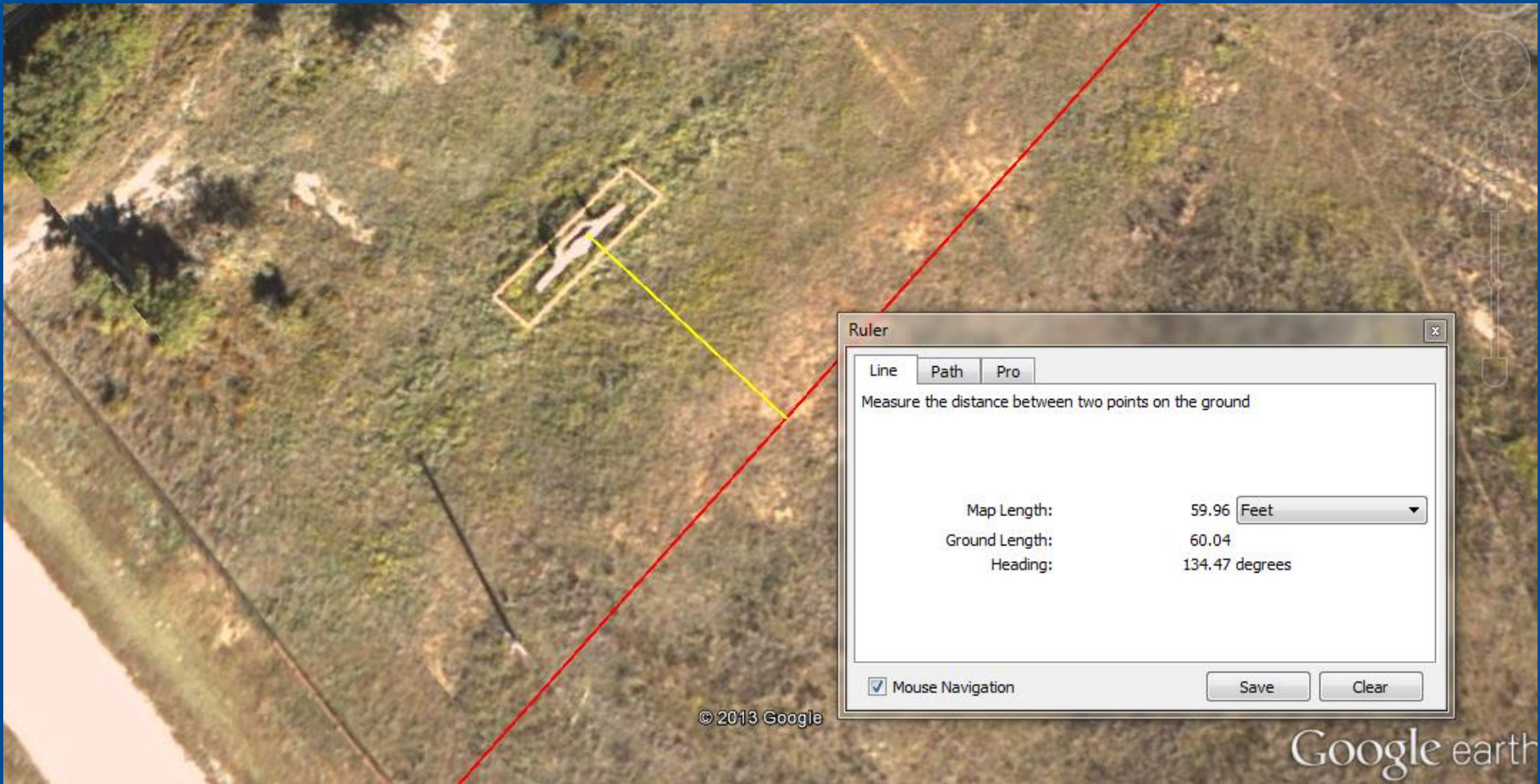
The screenshot displays a Google Earth interface with a measurement tool window open. The window, titled "Ruler", has three tabs: "Line", "Path", and "Pro". The "Line" tab is selected, and the text "Measure the distance between two points on the ground" is visible. The measurement data is as follows:

Measurement Type	Value	Unit
Map Length:	537.64	Feet
Ground Length:	537.85	
Heading:	180.13	degrees

At the bottom of the window, there is a checked checkbox for "Mouse Navigation" and two buttons labeled "Save" and "Clear". The background map shows a satellite view of a forested area with a cyan line and a red line overlaid. A vertical yellow line is also visible, connecting the two lines. The copyright notice "© 2013 Google" and the "Google ea" logo are visible at the bottom of the map.



KML Correction





Survey Images





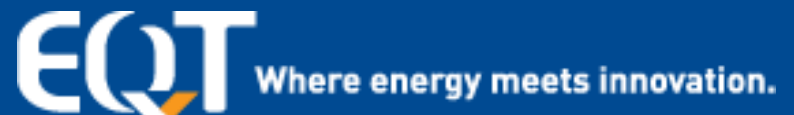
realSens™ Service Benefits Summary

realSens™ advantages:

- **Guaranteed ground level RoW coverage**
- **Helicopter safe survey altitude**
- **Minimal disruption to the public**
- **Does not rely on lasers or other artificial light source**
- **Significant cost savings**



Example of Customers Serviced

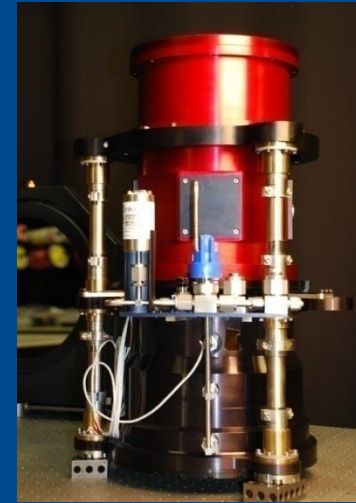




Contact

Synodon Inc.

6916 Roper Road
Edmonton, AB, T6B 3H9
Tel: 780.468.9568
www.synodon.com



Gordon Lair, VP Sales

gordon.lair@synodon.com

Cell: 780.982.0983

Tel: 780.468.9568 x26